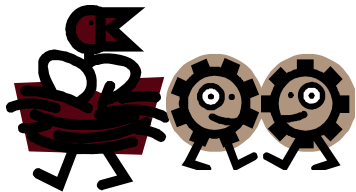
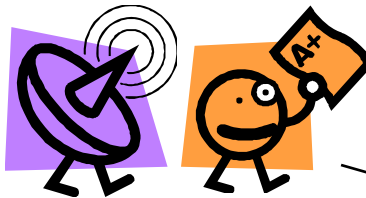


# massachusetts



## Getting Started and Key Connections

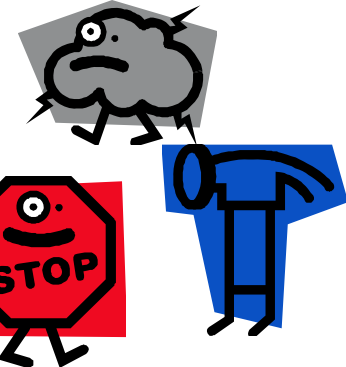
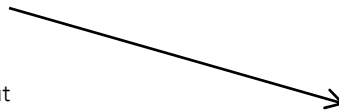
San Diego Summit –EEC/CTF  
 MECCS Start-up -DPH lead  
 MECCS application Affiliate Status  
 Great agency partners!: DPH,  
 DCF, EEC, DMH, ESE, CTF



## Information/ Accomplishments

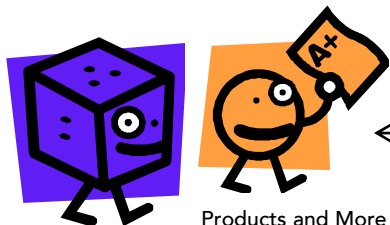
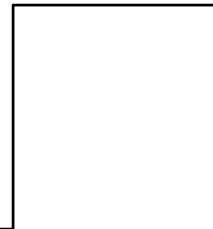
Big Events! -Getting the word out  
 And getting on board with SF; support from SF/CSSP

- Statewide conference keynote
- Annual Meeting Keynote
- Program Committee presentation
- MA Convention Center event
- EEC Newsletter
- Updates/info to grantees
- New partners!: (e.g., parent speakers,  
 Local program speakers, Conv. Ctr )



## Crisis, Barriers, and Overcoming them

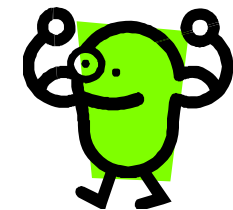
Budget Cuts (Economy)  
 Competing Priorities  
 Leadership Transitions



## Products and More Accomplishments

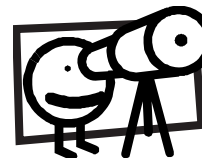
Despite obstacles,  
 much is accomplished!

- Logic models
- RFRs based on Protective Factors
- YCIW Mental Health Plan (embedded)



## Looking to the Future

Cross agency leadership  
 Parent Involvement and leadership work  
 Teaching Opportunities  
 New/more Contract Procurement (Protective Factors)  
 Program/contract evaluation activities  
 Add new partners!



## Critical Thinking:

Cross-System buy-in that this work is  
 essential to our collective work with families